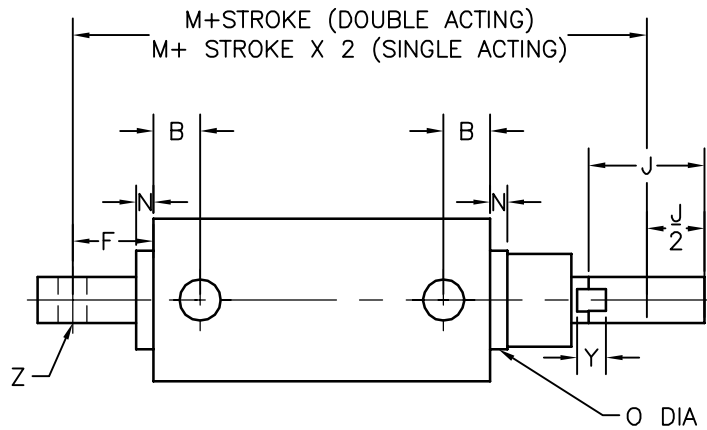
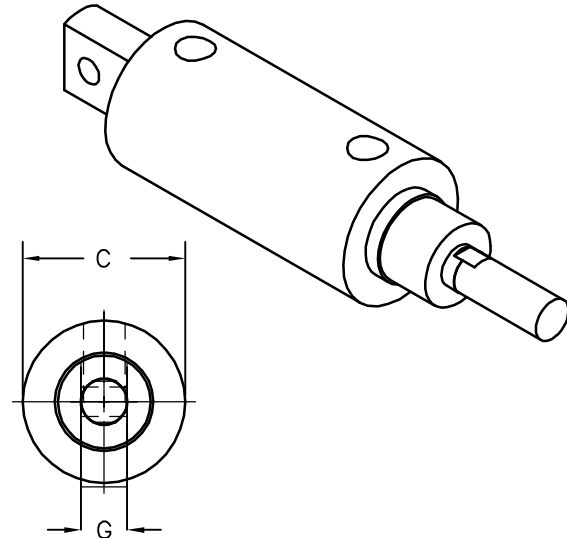
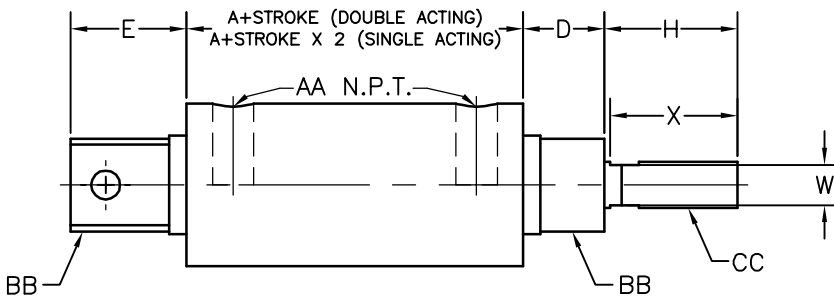


A-C-E



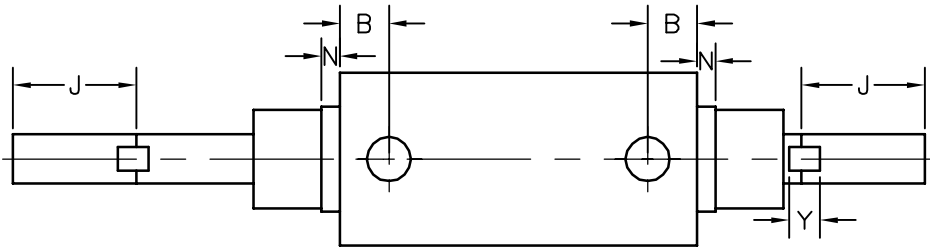
*5.375 SINGLE ENDED CYLINDERS HAVING TANG SECTION EXCEPT TYPES AN, CN, & EN.
 **ON OVERSIZED MODELS, H=1.375 & J=1.25
 ***3/4-16 BOTH ENDS ON TYPES "A" & "E"
 3/4-16 REAR AND 7/8-14 FRONT ON TYPE "C"
 OMIT DIMENSION E WHEN LAYING OUT CYLINDER WTH TANG SECTION OMITTED. N DIMENSION REMAINS EXCEPT ON .875', 1.125' AND 4' BORES.



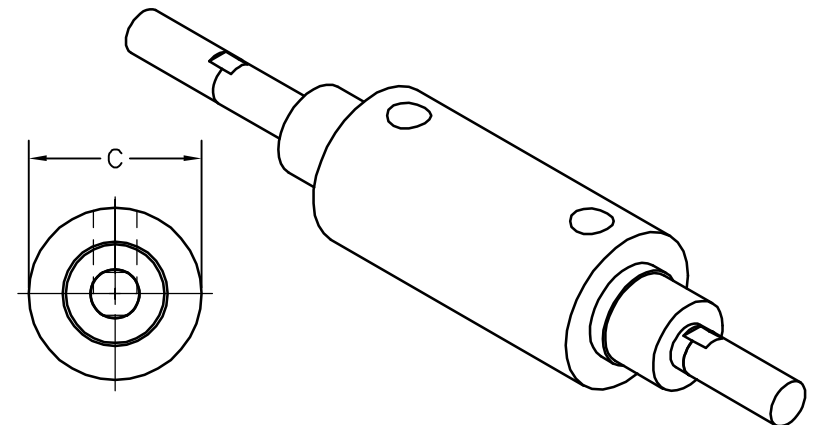
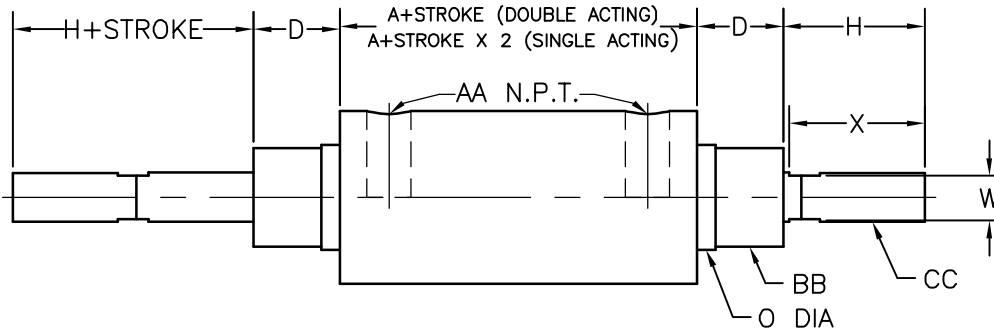
CYL BORE	A		B	C	D		E	F	G	H	J	M				N
	A	C & E			STD	OS						A		C & E		
												STD	OS	STD	OS	
.875 std	2.0625	3.0625	.375	1.125	.625	X	1	.6875	.375	1	.875	3.9375	X	4.9375	X	.125
1.125 std	2.0625	3.0625	.375	1.375	.625	.626	1	.6875	.375	1**	.875**	3.9375	4.125	4.9377	5.125	.125
1.5 std	2.625	3.625	0.5	1.75	0.875	0.875	1.25	0.875	0.5	1.4375	1.25	5.1875	5.1875	6.1875	6.1875	0.1875
2 std	2.625	3.625	0.5	2.25	0.875	0.875	1.25	0.875	0.5	1.4375	1.25	5.1875	5.1875	6.1875	6.1875	0.1875
2.5 std	2.875	3.875	0.5625	2.75	1	1	2	1.375	0.625	1.6875	1.5	6.1875	6.1875	7.1875	7.1875	0.25
3 std	2.875	3.875	0.5625	3.25	1	1	2	1.375	0.625	1.6875	1.5	6.1875	6.1875	7.1875	7.1875	0.25
4 std	*4.875	*4.875	0.8125	4.375	1.125	1.875	2.1875	1.4375	0.75	2.25	1.875	9.25	10	9.25	10	0.1875

CYL BORE	O		Z	AA	BB		CC		ROD DIA		WRENCH FLATS					
	STD	OS			STD	OS	STD	OS	STD	OS	W		X		Y	
											STD	OS	STD	OS	STD	OS
.875 std	.75	X	.25	1/8	.75	X	0.37	X	.375	X	0.3125	X	0.9375	X	0.3125	X
1.125 std	.75***	0.875	.25	1/8	.875***	.875	0.37	0.50	.375	.5	0.3125	0.4375	0.9375	1.375	0.3125	0.3125
1.5 std	1.0625	1.0625	0.3125	1/4	1	1	0.50	0.62	0.5	0.625	0.4375	0.5	1.375	1.375	0.3125	0.3125
2 std	1.0625	1.375	0.3125	1/4	1	1.375	0.62	0.75	0.625	0.75	0.5	0.625	1.375	1.375	0.3125	0.3125
2.5 std	1.375	1.5	0.4375	3/8	1.375	1.5	0.75	1.00	0.75	1	0.625	0.875	1.625	1.625	0.3125	0.375
3 std	1.375	1.5	0.4375	3/8	1.375	1.5	0.75	1.00	0.75	1	0.625	0.875	1.625	1.625	0.3125	0.375
4 std	1.75	2.25	0.5	1/2	1.75	2.25	1.00	1.25	1	1.25	0.875	1.125	2.125	2.125	0.375	0.375

AD-CD-ED



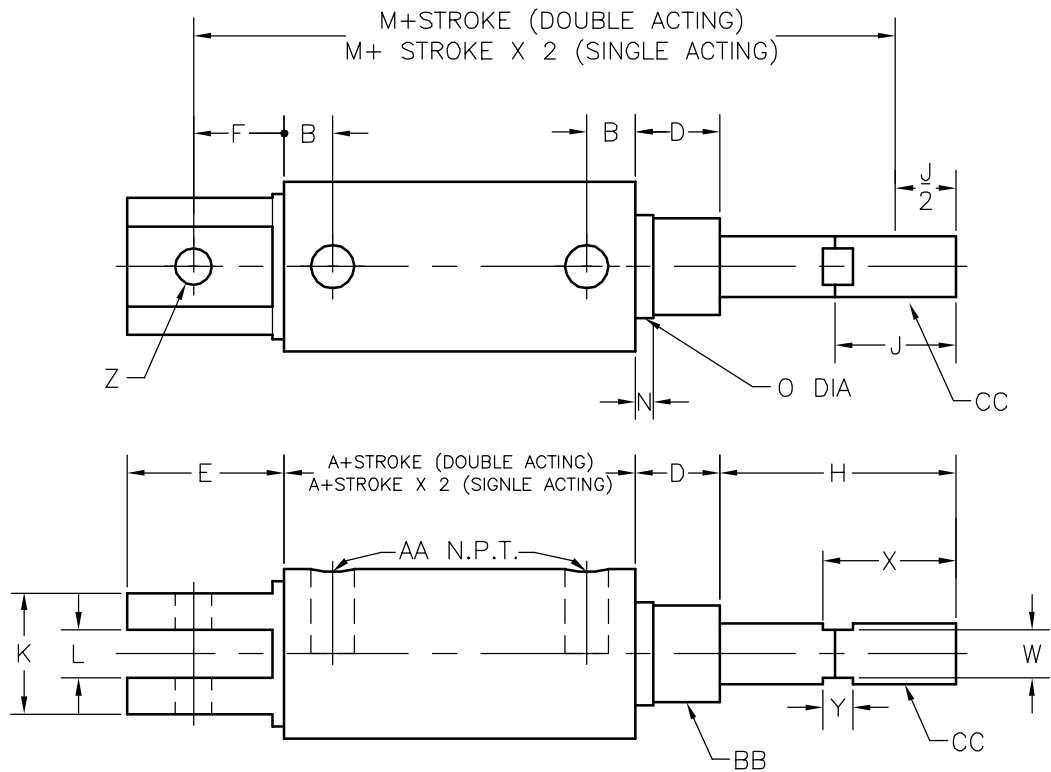
*5.375 SINGLE ENDED CYLINDERS HAVING TANG SECTION EXCEPT TYPES AN, CN, & EN.
 **ON OVERSIZED MODELS, H=1.375 & J=1.25
 ***3/4-16 BOTH ENDS ON TYPES "A" & "E"
 3/4-16 REAR AND 7/8-14 FRONT ON TYPE "C"
 OMIT DIMENSION E WHEN LAYING OUT CYLINDER WITH TANG SECTION OMITTED. N DIMENSION REMAINS EXCEPT ON .875', 1.125' AND 4' BORES.



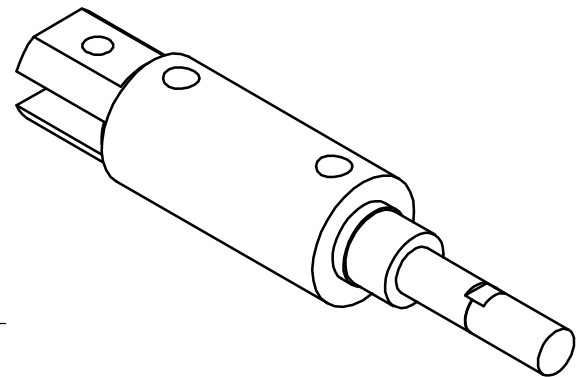
CYL BORE	A		B	C	D		E	F	G	H	J	M				N
	AD	CD & ED			STD	OS						AD		CD & ED		
												STD	OS	STD	OS	
.875 std	2.0625	3.0625	.375	1.125	.625	X	X	X	X	1	.875	X	X	X	X	.125
1.125 std	2.0625	3.0625	.375	1.375	.625	.626	X	X	X	1**	.875**	X	X	X	X	.125
1.5 std	2.625	3.625	0.5	1.75	0.875	0.875	X	X	X	1.4375	1.25	X	X	X	X	0.1875
2 std	2.625	3.625	0.5	2.25	0.875	0.875	X	X	X	1.4375	1.25	X	X	X	X	0.1875
2.5 std	2.875	3.875	0.5625	2.75	1	1	X	X	X	1.6875	1.5	X	X	X	X	0.25
3 std	2.875	3.875	0.5625	3.25	1	1	X	X	X	1.6875	1.5	X	X	X	X	0.25
4 std	*4.875	*4.875	0.8125	4.375	1.125	1.875	X	X	X	2.25	1.875	X	X	X	X	0.1875

CYL BORE	O		Z	AA	BB		CC		ROD DIA		WRENCH FLATS					
	STD	OS			STD	OS	STD	OS	STD	OS	W		X		Y	
											STD	OS	STD	OS	STD	OS
.875 std	.75	X	X	1/8	.75	X	0.37	X	.375	X	0.3125	X	0.9375	X	0.3125	X
1.125 std	.75***	0.875	X	1/8	.875***	.875	0.37	0.50	.375	.5	0.3125	0.4375	0.9375	1.375	0.3125	0.3125
1.5 std	1.0625	1.0625	X	1/4	1	1	0.50	0.62	0.5	0.625	0.4375	0.5	1.375	1.375	0.3125	0.3125
2 std	1.0625	1.375	X	1/4	1	1.375	0.62	0.75	0.625	0.75	0.5	0.625	1.375	1.375	0.3125	0.3125
2.5 std	1.375	1.5	X	3/8	1.375	1.5	0.75	1.00	0.75	1	0.625	0.875	1.625	1.625	0.3125	0.375
3 std	1.375	1.5	X	3/8	1.375	1.5	0.75	1.00	0.75	1	0.625	0.875	1.625	1.625	0.3125	0.375
4 std	1.75	2.25	X	1/2	1.75	2.25	1.00	1.25	1	1.25	0.875	1.125	2.125	2.125	0.375	0.375

AN-CN-EN



*5.375 SINGLE ENDED CYLINDERS HAVING TANG SECTION EXCEPT TYPES AN, CN, & EN.
 **ON OVERSIZED MODELS, H=1.375 & J=1.25
 ***3/4-16 BOTH ENDS ON TYPES "A" & "E"
 3/4-16 REAR AND 7/8-14 FRONT ON TYPE "C"
 OMIT DIMENSION E WHEN LAYING OUT CYLINDER WTH TANG SECTION OMITTED. N DIMENSION REMAINS EXCEPT ON .875', 1.125' AND 4' BORES.

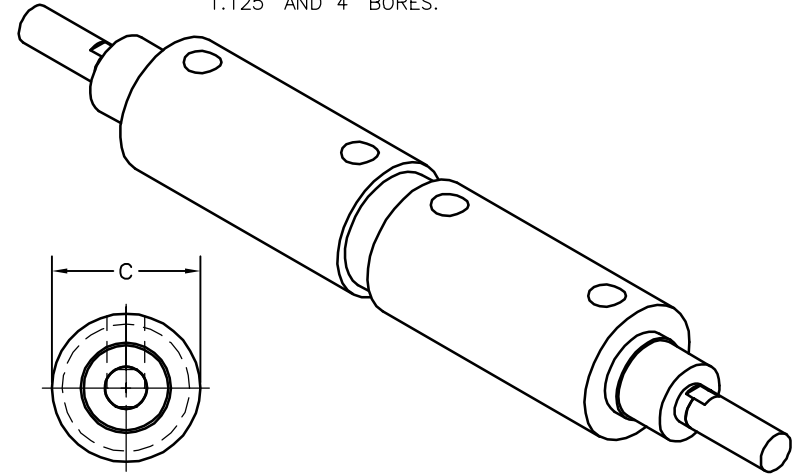
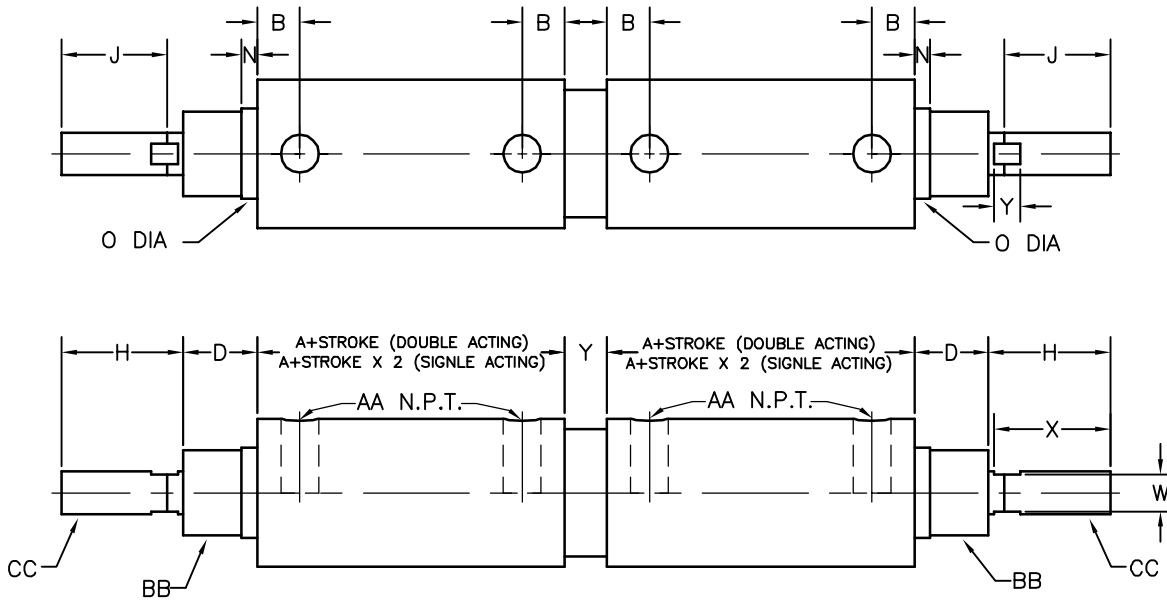


CYL BORE	A		B	C	D		E	F	G	H		J	K	L	M				N
	AN	CN & EN			STD	OS				TYPE AN	TYPE CN & EN				AN		CN & EN		
															STD	OS	STD	OS	
.875 std	2.0625	3.0625	.375	1.125	.625	X	.8125	.4375	X	1	1	.875	.875	.25	3.6875	X	4.6875	X	.125
1.125 std	2.0625	3.0625	.375	1.375	.625	.626	1	.6875	X	1*	1*	.875**	.9375	.375	3.9375	4.125	4.9375	5.125	.125
1.5 std	2.625	3.625	0.5	1.75	0.875	0.875	1.625	0.9375	X	2.4375	1.4375	1.25	1.25	0.5	6.25	X	6.25	X	0.1875
2 std	2.625	3.625	0.5	2.25	0.875	0.875	2.25	1.5625	X	2.4375	1.4375	1.25	1.5	0.5	6.875	6.875	6.875	6.875	0.1875
2.5 std	2.875	3.875	0.5625	2.75	1	1	1.8125	1.125	X	3.6875	0.6875	1.5	1.5	0.5	7.9375	7.9375	7.9375	7.9375	0.25
3 std	2.875	3.875	0.5625	3.25	1	1	2.3125	1.625	X	3.6875	2.6875	1.5	1.5	0.5	8.4375	8.4375	8.4375	8.4375	0.25
4 std	*4.875	*4.875	0.8125	4.375	1.125	1.875	3.375	2.375	X	2.25	2.25	1.875	2.25	0.75	9.6875	10.4375	9.6875	10.4375	0.1875

CYL BORE	P	V	V1	Z	O		AA	BB		CC		ROD DIA		WRENCH FLATS					
					STD	OS		STD	OS	STD	OS	STD	OS	W		X		Y	
														STD	OS	STD	OS	STD	OS
.875 std	0.875	0.8125	0.4375	0.25	.75	X	1/8	.75	X	.38	X	.375	X	0.3125	X	0.9375	X	0.3125	X
1.125 std	1.125	0.875	0.5625	0.375	.75***	0.875	1/8	.875***	.875	.38	.5	.375	.5	0.3125	0.4375	0.9375	1.375	0.3125	0.3125
1.5 std	1.5	1.5	0.8125	0.375	1.0625	1.0625	1/4	1	1	0.625	X	0.5	0.625	0.4375	0.5	1.375	1.375	0.3125	0.3125
2 std	2	1.875	1.1875	0.5	1.0625	1.375	1/4	1	1.375	0.625	0.75	0.625	0.75	0.5	0.625	1.375	1.375	0.3125	0.3125
2.5 std	2.25	1.6875	1	0.5	1.375	1.5	3/8	1.375	1.5	0.75	1	0.75	1	0.625	0.875	1.625	1.625	0.3125	0.375
3 std	2.25	1.75	1.0625	0.5	1.375	1.5	3/8	1.375	1.5	0.75	1	0.75	1	0.625	0.875	1.625	1.625	0.3125	0.375
4 std	3	2.5	1.5	0.75	1.75	2.25	1/2	1.75	2.25	1	1.25	1	1.25	0.875	1.125	2.125	2.125	0.375	0.375

ABB-CBB-EBB

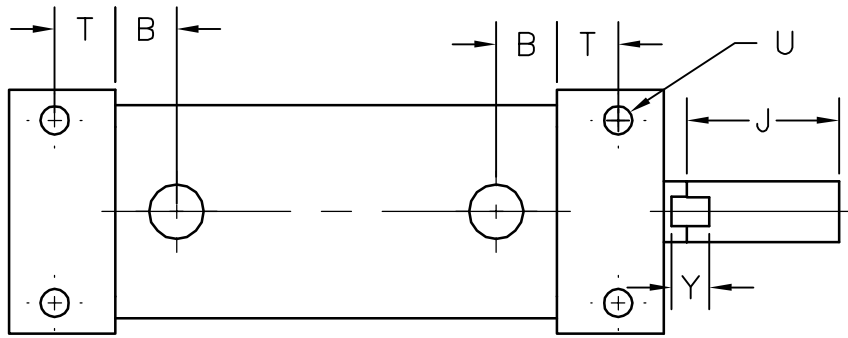
*5.375 SINGLE ENDED CYLINDERS HAVING TANG SECTION EXCEPT TYPES AN, CN, & EN.
 **ON OVERSIZED MODELS, H=1.375 & J=1.25
 ***3/4-16 BOTH ENDS ON TYPES "A" & "E"
 3/4-16 REAR AND 7/8-14 FRONT ON TYPE "C"
 OMIT DIMENSION E WHEN LAYING OUT CYLINDER WITH TANG SECTION OMITTED. N DIMENSION REMAINS EXCEPT ON .875', 1.125' AND 4' BORES.



CYL BORE	A		B	C	D		E	F	G	H	J	M				N
	ABB	CBB & EBB			STD	OS						ABB		CBB & EBB		
												STD	OS	STD	OS	
.875 std	2.0625	3.0625	.375	1.125	.625	X	X	X	X	1	.875	X	X	X	X	.125
1.125 std	2.0625	3.0625	.375	1.375	.625	.626	X	X	X	1**	.875**	X	X	X	X	.125
1.5 std	2.625	3.625	0.5	1.75	0.875	0.875	X	X	X	1.4375	1.25	X	X	X	X	0.1875
2 std	2.625	3.625	0.5	2.25	0.875	0.875	X	X	X	1.4375	1.25	X	X	X	X	0.1875
2.5 std	2.875	3.875	0.5625	2.75	1	1	X	X	X	1.6875	1.5	X	X	X	X	0.25
3 std	2.875	3.875	0.5625	3.25	1	1	X	X	X	1.6875	1.5	X	X	X	X	0.25
4 std	*4.875	*4.875	0.8125	4.375	1.125	1.875	X	X	X	2.25	1.875	X	X	X	X	0.1875

CYL BORE	O		Y	Z	AA	BB		CC		ROD DIA		WRENCH FLATS					
	STD	OS				STD	OS	STD	OS	STD	OS	W		X		Y	
												STD	OS	STD	OS	STD	OS
.875 std	.75	X	.5	X	1/8	.75	X	0.38	X	.375	X	0.3125	X	0.9375	X	0.3125	X
1.125 std	.75***	0.875	0.5	X	1/8	.875***	.875	0.38	0.50	.375	.5	0.3125	0.4375	0.9375	1.375	0.3125	0.3125
1.5 std	1.0625	1.0625	0.5	X	1/4	1	1	0.50	0.62	0.5	0.625	0.4375	0.5	1.375	1.375	0.3125	0.3125
2 std	1.0625	1.375	0.5	X	1/4	1	1.375	0.62	0.75	0.625	0.75	0.5	0.625	1.375	1.375	0.3125	0.3125
2.5 std	1.375	1.5	0.5	X	3/8	1.375	1.5	0.75	1.00	0.75	1	0.625	0.875	1.625	1.625	0.3125	0.375
3 std	1.375	1.5	0.5	X	3/8	1.375	1.5	0.75	1.00	0.75	1	0.625	0.875	1.625	1.625	0.3125	0.375
4 std	1.75	2.25	1.125	X	1/2	1.75	2.25	1.00	1.25	1	1.25	0.875	1.125	2.125	2.125	0.375	0.375

AS-CS-ES



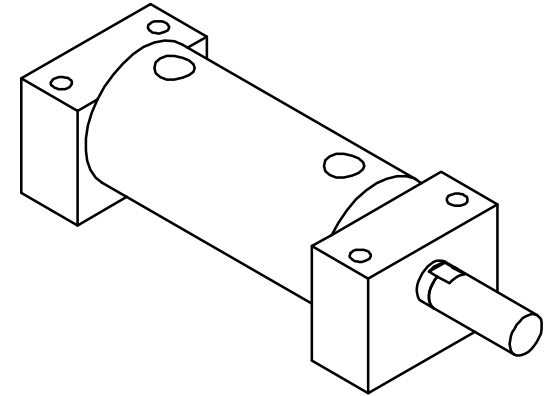
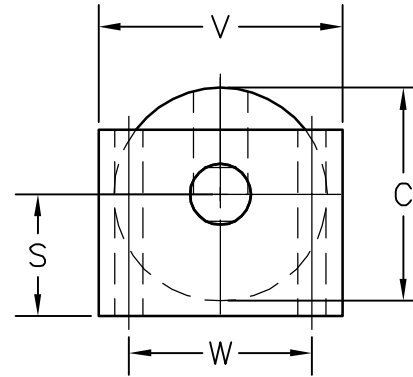
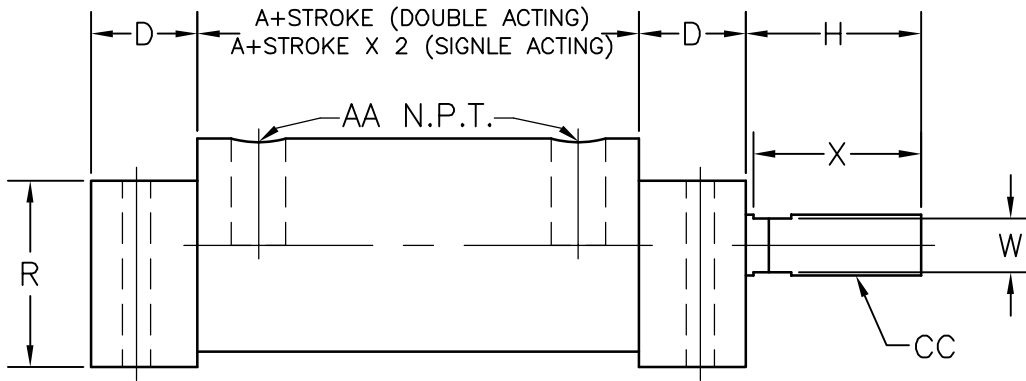
*5.375 SINGLE ENDED CYLINDERS HAVING TANG SECTION EXCEPT TYPES AN, CN, & EN.

**ON OVERSIZED MODELS, H=1.375 & J=1.25

***3/4-16 BOTH ENDS ON TYPES "A" & "E"

3/4-16 REAR AND 7/8-14 FRONT ON TYPE "C"

OMIT DIMENSION E WHEN LAYING OUT CYLINDER WITH TANG SECTION OMITTED. N DIMENSION REMAINS EXCEPT ON .875', 1.125' AND 4' BORES.



CYL BORE	A		B	C	D		E	F	G	H	J	M				N	O		Z
	AS	CS & ES			STD	OS						AS		CS & ES			STD	OS	
												STD	OS	STD	OS				
.875 std	2.0625	3.0625	.375	1.125	.625	X	X	X	X	1	.875	X	X	X	X	X	X	X	
1.125 std	2.0625	3.0625	.375	1.375	.625	X	X	X	X	1**	.875**	X	X	X	X	X	X	X	
1.5 std	2.625	3.625	0.5	1.75	0.875	X	X	X	X	1.4375	1.25	X	X	X	X	X	X	X	
2 std	2.625	3.625	0.5	2.25	0.875	X	X	X	X	1.4375	1.25	X	X	X	X	X	X	X	

CYL BORE	AA	BB		CC		ROD DIA		R	S	T	U	V	W	WRENCH FLATS							
		STD	OS	STD	OS	STD	OS							STD	OS	W		X		Y	
																STD	OS	STD	OS	STD	OS
.875 std	1/8	X	X	0.38	X	.375	X	1.0313	0.75	0.3438	0.2188	1.5	1.125	0.3125	X	0.9375	X	0.3125	X		
1.125 std	1/8	X	X	0.38	0.50	.375	.5	1.125	0.75	0.3438	0.2188	1.5	1.125	0.3125	0.4375	0.9375	1.375	0.3125	0.3125		
1.5 std	1/4	X	X	0.50	0.62	0.5	0.625	1.5313	1	0.5	0.2813	2	1.5	0.4375	0.5	1.375	1.375	0.3125	0.3125		
2 std	1/4	X	X	0.62	0.75	0.625	0.75	2	1.25	0.5	0.3475	2.25	1.625	0.5	0.625	1.375	1.375	0.3125	0.3125		

ASD-CSD-ESD

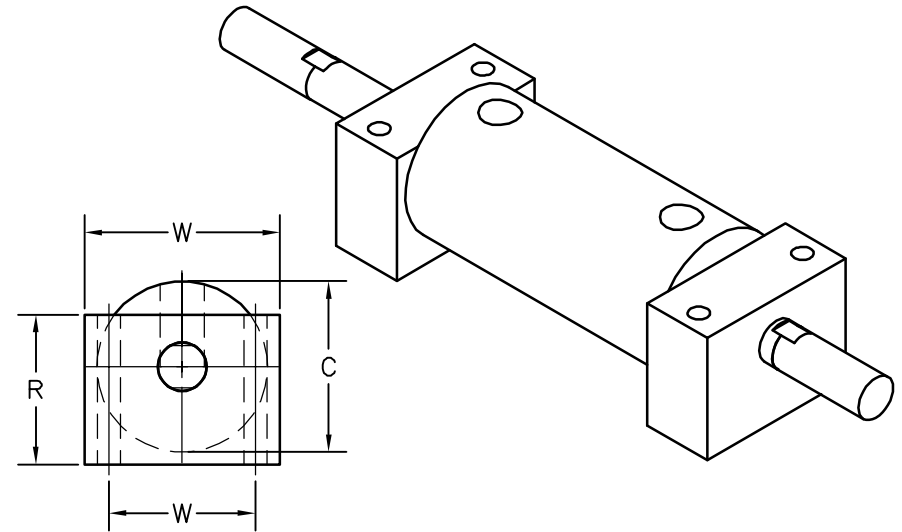
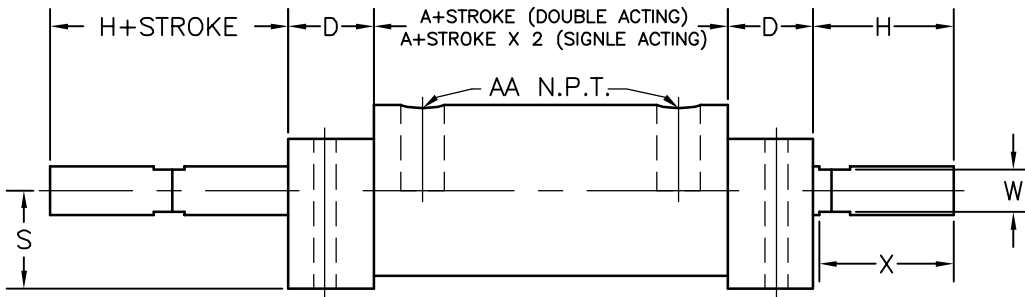
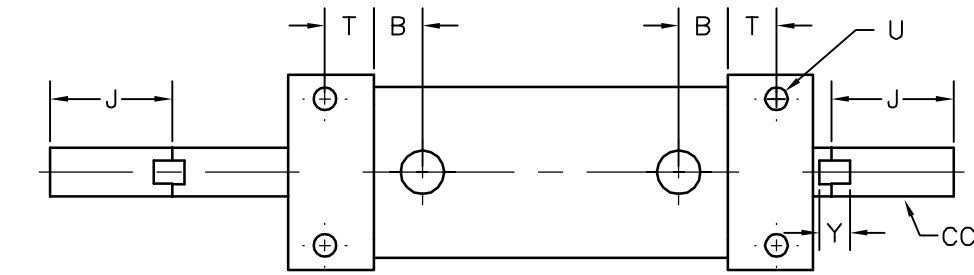
*5.375 SINGLE ENDED CYLINDERS HAVING TANG SECTION EXCEPT TYPES AN, CN, & EN.

**ON OVERSIZED MODELS, H=1.375 & J=1.25

***3/4-16 BOTH ENDS ON TYPES "A" & "E"

3/4-16 REAR AND 7/8-14 FRONT ON TYPE "C"

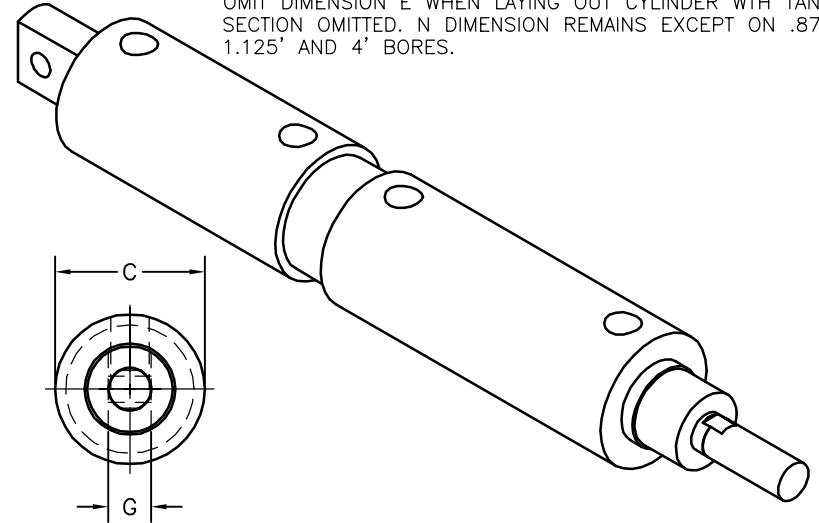
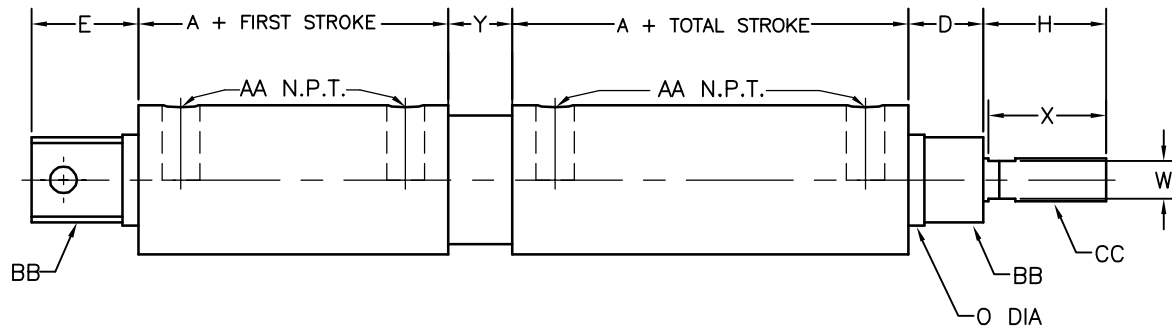
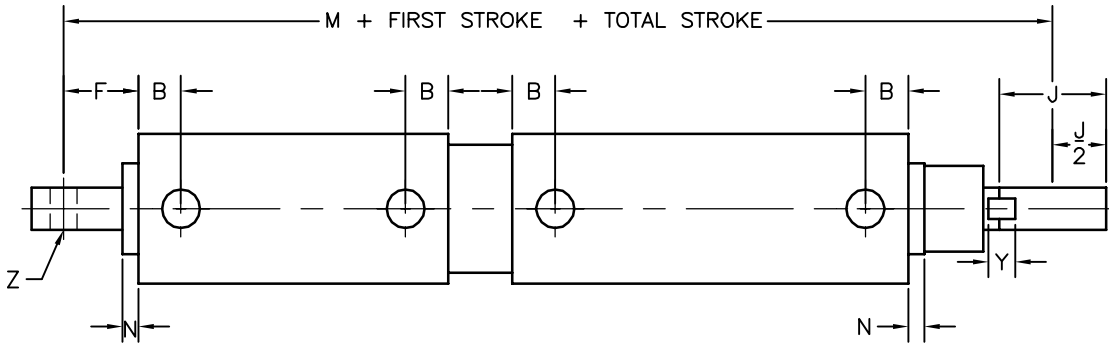
OMIT DIMENSION E WHEN LAYING OUT CYLINDER WITH TANG SECTION OMITTED. N DIMENSION REMAINS EXCEPT ON .875', 1.125' AND 4' BORES.



CYL BORE	A		B	C	D		E	F	G	H	J	M				N	O		Z
	ASD	CSD & ESD			STD	OS						ASD		CSD & ESD					
												STD	OS	STD	OS				
.875 std	2.0625	3.0625	.375	1.125	.625	X	X	X	X	1	.875	X	X	X	X	X	X	X	
1.125 std	2.0625	3.0625	.375	1.375	.625	.626	X	X	X	1**	.875**	X	X	X	X	X	X	X	
1.5 std	2.625	3.625	0.5	1.75	0.875	0.875	X	X	X	1.4375	1.25	X	X	X	X	X	X	X	
2 std	2.625	3.625	0.5	2.25	0.875	0.875	X	X	X	1.4375	1.25	X	X	X	X	X	X	X	

CYL BORE	AA	BB		CC		ROD DIA		R	S	T	U	V	W	WRENCH FLATS					
		STD	OS	STD	OS	STD	OS							W		X		Y	
														STD	OS	STD	OS	STD	OS
.875 std	1/8	X	X	.38	X	.375	X	1.03125	0.75	0.34375	0.21875	1.5	1.125	0.3125	X	0.9375	X	0.3125	X
1.125 std	1/8	X	X	.38	0.50	.375	.5	1.125	0.75	0.34375	0.21875	1.5	1.125	0.3125	0.4375	0.9375	1.375	0.3125	0.3125
1.5 std	1/4	X	X	0.50	0.62	0.5	0.625	1.53125	1	0.5	0.28125	2	1.5	0.4375	0.5	1.375	1.375	0.3125	0.3125
2 std	1/4	X	X	0.62	0.75	0.625	0.75	2	1.25	0.5	0.3475	2.25	1.625	0.5	0.625	1.375	1.375	0.3125	0.3125

AP-CP-EP

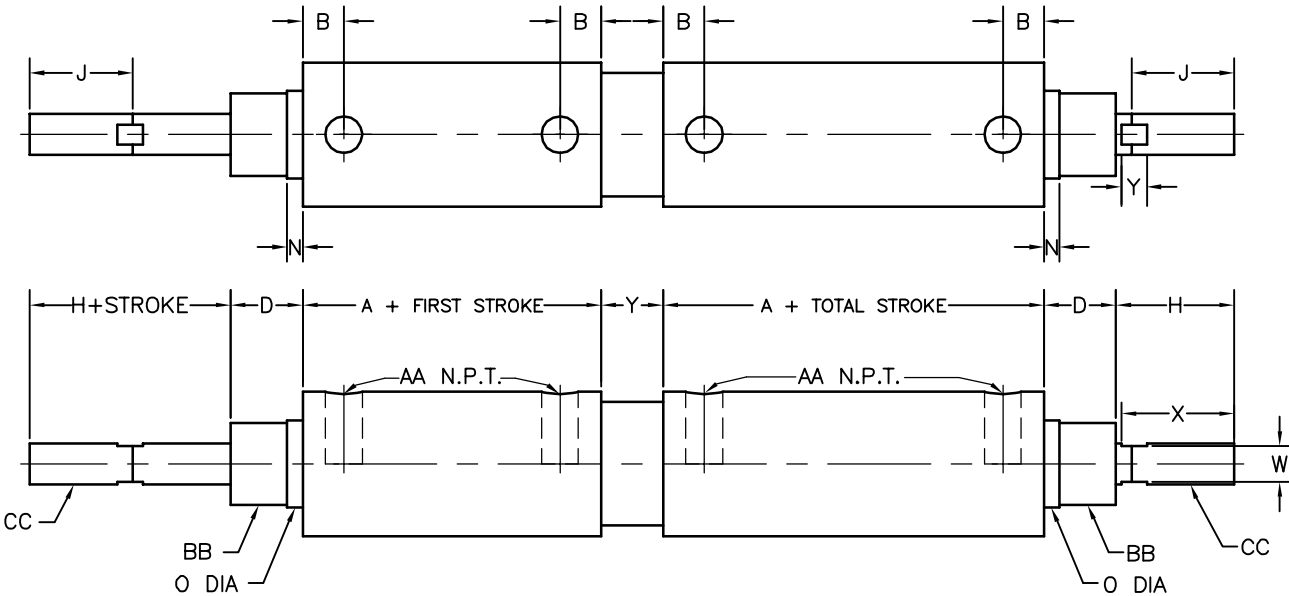


*5.375 SINGLE ENDED CYLINDERS HAVING TANG SECTION EXCEPT TYPES AN, CN, & EN.
 **ON OVERSIZED MODELS, H=1.375 & J=1.25
 ***3/4-16 BOTH ENDS ON TYPES "A" & "E"
 3/4-16 REAR AND 7/8-14 FRONT ON TYPE "C"
 OMIT DIMENSION E WHEN LAYING OUT CYLINDER WITH TANG SECTION OMITTED. N DIMENSION REMAINS EXCEPT ON .875', 1.125' AND 4' BORES.

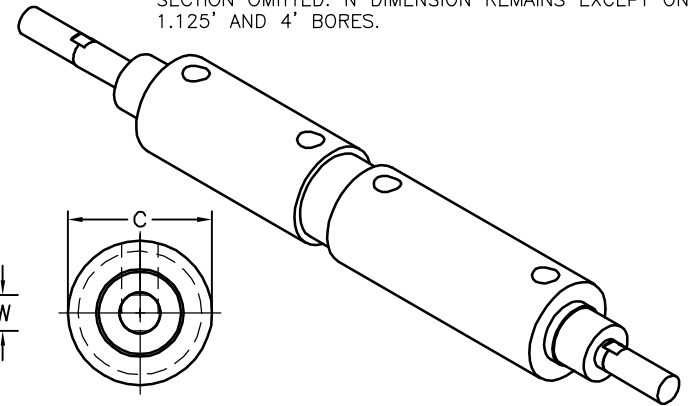
CYL BORE	A		B	C	D		E	F	G	H	J	M				N
	AP	CP & EP			STD	OS						AP		CP & EP		
												STD	OS	STD	OS	
1.5 std	2.625	3.625	0.5	1.75	0.875	0.875	1.25	0.875	0.5	1.4375	1.25	8.5625	8.5625	10.563	10.563	0.1875
2 std	2.625	3.625	0.5	2.25	0.875	0.875	1.25	0.875	0.5	1.4375	1.25	8.5625	8.5625	10.563	10.563	0.1875
2.5 std	2.875	3.875	0.5625	2.75	1	1	2	1.375	0.625	1.6875	1.5	10.1875	10.1875	12.188	12.188	0.25
3 std	2.875	3.875	0.5625	3.25	1	1	2	1.375	0.625	1.6875	1.5	10.1875	10.1875	10.188	12.188	0.25
4 std	*4.875	*4.875	0.8125	4.375	1.125	1.875	2.1875	1.4375	0.75	2.25	1.875	15.25	16	15.25	16	0.1875

CYL BORE	O		Y	Z	AA	BB		CC		ROD DIA		WRENCH FLATS					
	STD	OS				STD	OS	STD	OS	STD	OS	W		X		Y	
												STD	OS	STD	OS	STD	OS
1.5 std	1.06	1.06	0.75	0.313	1/4	1	1	0.50	0.62	0.5	0.625	0.4375	0.5	1.375	1.375	0.3125	0.3125
2 std	1.06	1.38	0.75	0.313	1/4	1	1.375	0.62	0.75	0.625	0.75	0.5	0.625	1.375	1.375	0.3125	0.3125
2.5 std	1.38	1.50	1.125	0.438	3/8	1.375	1.5	0.75	1.00	0.75	1	0.625	0.875	1.625	1.625	0.3125	0.375
3 std	1.38	1.50	1.125	0.438	3/8	1.375	1.5	0.75	1.00	0.75	1	0.625	0.875	1.625	1.625	0.3125	0.375
4 std	1.75	2.25	1.125	0.5	1/2	1.75	2.25	1.00	1.25	1	1.25	0.875	1.125	2.125	2.125	0.375	0.375

APD-CPD-EPD

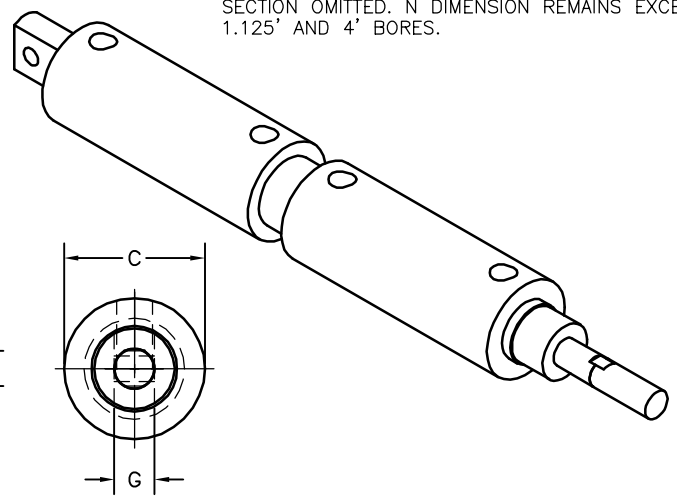
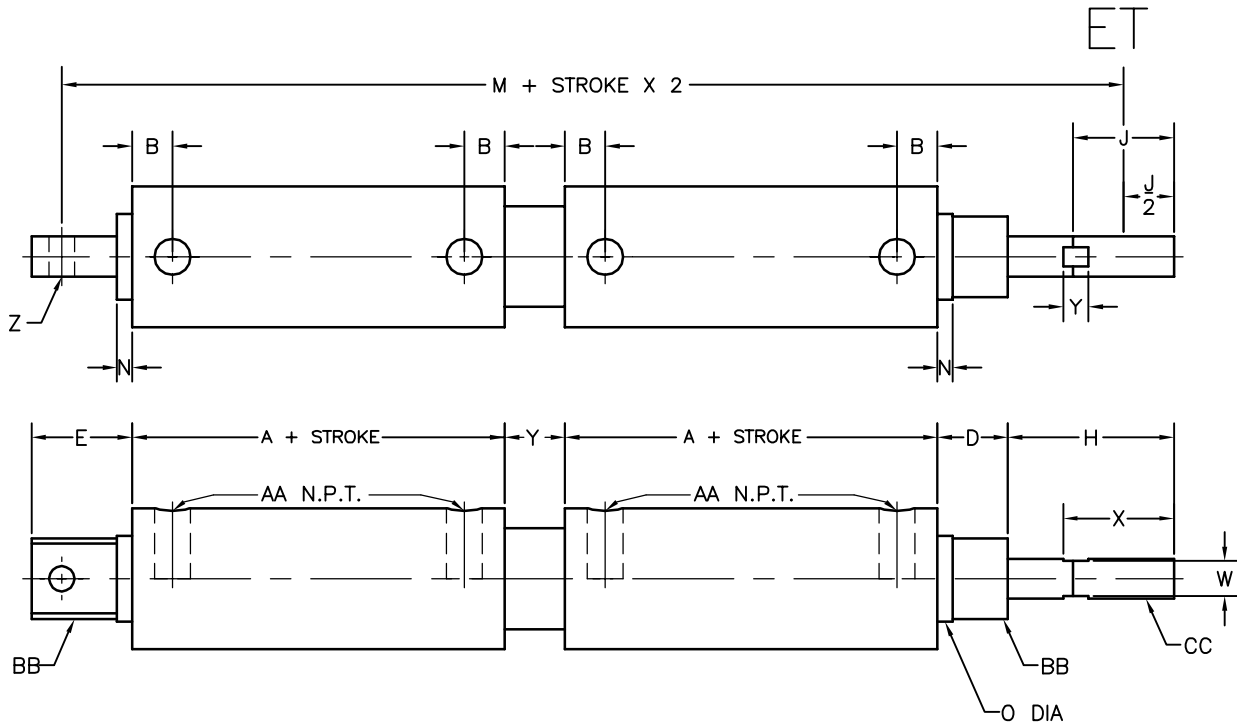


*5.375 SINGLE ENDED CYLINDERS HAVING TANG SECTION EXCEPT TYPES AN, CN, & EN.
 **ON OVERSIZED MODELS, H=1.375 & J=1.25
 ***3/4-16 BOTH ENDS ON TYPES "A" & "E"
 3/4-16 REAR AND 7/8-14 FRONT ON TYPE "C"
 OMIT DIMENSION E WHEN LAYING OUT CYLINDER WITH TANG SECTION OMITTED. N DIMENSION REMAINS EXCEPT ON .875', 1.125' AND 4" BORES.



CYL BORE	A		B	C	D		E	F	G	H	J	M				N
	APD	CPD & EPD			STD	OS						APD		CPD & EPD		
												STD	OS	STD	OS	
1.5 std	2.625	3.625	0.5	1.75	0.875	0.875	X	X	X	1.4375	1.25	X	X	X	X	0.1875
2 std	2.625	3.625	0.5	2.25	0.875	0.875	X	X	X	1.4375	1.25	X	X	X	X	0.1875
2.5 std	2.875	3.875	0.5625	2.75	1	1	X	X	X	1.6875	1.5	X	X	X	X	0.25
3 std	2.875	3.875	0.5625	3.25	1	1	X	X	X	1.6875	1.5	X	X	X	X	0.25
4 std	*4.875	*4.875	0.8125	4.375	1.125	1.875	X	X	X	2.25	1.875	X	X	X	X	0.1875

CYL BORE	O		Y	Z	AA	BB		CC		ROD DIA		WRENCH FLATS					
	STD	OS				STD	OS	STD	OS	STD	OS	W		X		Y	
												STD	OS	STD	OS	STD	OS
1.5 std	1.0625	1.0625	0.75	X	1/4	1	1	0.50	0.62	0.5	0.625	0.4375	0.5	1.375	1.375	0.3125	0.3125
2 std	1.0625	1.375	0.75	X	1/4	1	1.375	0.62	0.75	0.625	0.75	0.5	0.625	1.375	1.375	0.3125	0.3125
2.5 std	1.375	1.5	1.125	X	3/8	1.375	1.5	0.75	1.00	0.75	1	0.625	0.875	1.625	1.625	0.3125	0.375
3 std	1.375	1.5	1.125	X	3/8	1.375	1.5	0.75	1.00	0.75	1	0.625	0.875	1.625	1.625	0.3125	0.375
4 std	1.75	2.25	1.125	X	1/2	1.75	2.25	1.00	1.25	1	1.25	0.875	1.125	2.125	2.125	0.375	0.375

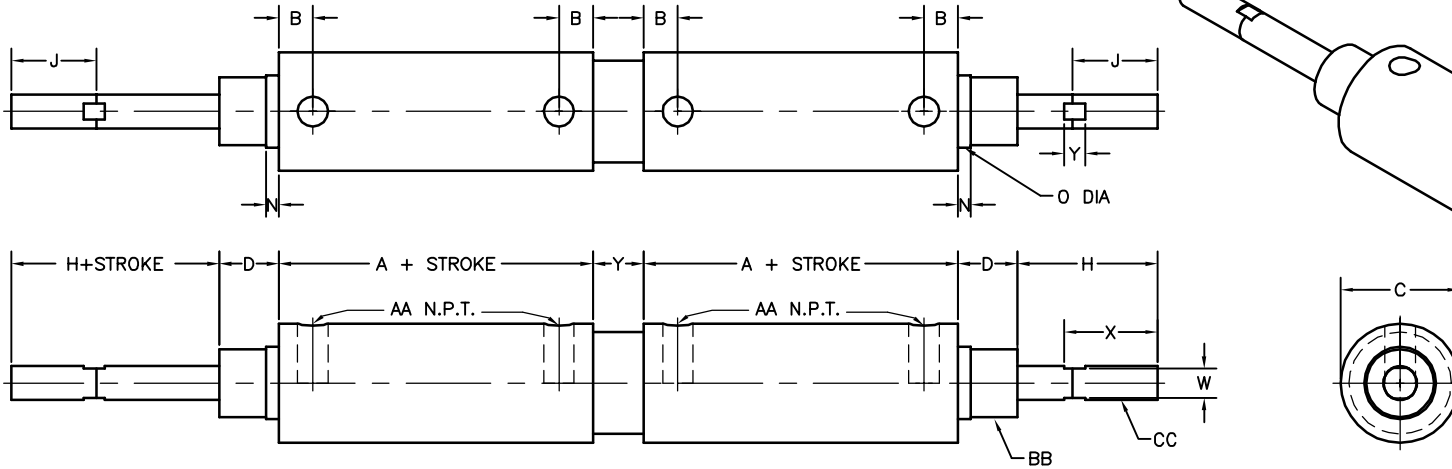


*5.375 SINGLE ENDED CYLINDERS HAVING TANG SECTION EXCEPT TYPES AN, CN, & EN.
 **ON OVERSIZED MODELS, H=1.375 & J=1.25
 ***3/4-16 BOTH ENDS ON TYPES "A" & "E"
 3/4-16 REAR AND 7/8-14 FRONT ON TYPE "C"
 OMIT DIMENSION E WHEN LAYING OUT CYLINDER WITH TANG SECTION OMITTED. N DIMENSION REMAINS EXCEPT ON .875', 1.125' AND 4' BORES.

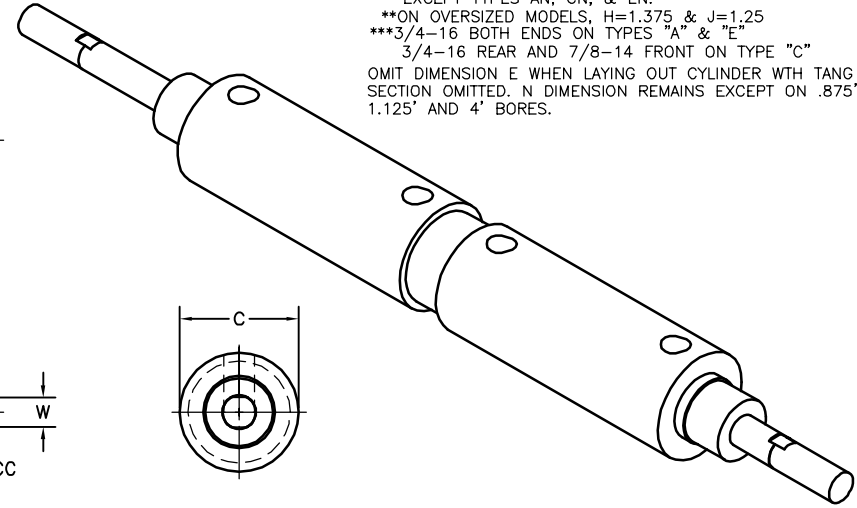
CYL BORE	A		B	C	D		E	F	G	H	J	M		O	
	A	C & E			STD	OS						STD	OS		
	1.5 std	X			3.625	0.5						1.75	0.875	0.875	1.25
2 std	X	3.625	0.5	2.25	0.875	0.875	1.25	0.875	0.5	2.0625	1.25	11.188	11.188	1.0625	1.375
2.5 std	X	3.875	0.5625	2.75	1	1	2	1.375	0.625	1.6875	1.5	12.188	12.188	1.375	1.5
3 std	X	3.875	0.5625	3.25	1	1	2	1.375	0.625	1.6875	1.5	12.188	12.188	1.375	1.5
4 std	X	*4.875	0.8125	4.375	1.125	1.875	2.1875	1.4375	0.75	2.25	1.875	15.25	16	1.75	2.25

CYL BORE	N	Y	Z	AA	BB		CC		ROD DIA		WRENCH FLATS					
					STD	OS	STD	OS	STD	OS	W		X		Y	
											STD	OS	STD	OS	STD	OS
1.5 std	0.1875	0.75	0.3125	1/4	1	1	0.50	0.62	0.5	0.625	0.4375	0.5	1.375	1.375	0.3125	0.3125
2 std	0.1875	0.75	0.3125	1/4	1	1.375	0.62	0.75	0.625	0.75	0.5	0.625	1.375	1.375	0.3125	0.3125
2.5 std	0.25	1.125	0.4375	3/8	1.375	1.5	0.75	1.00	0.75	1	0.625	0.875	1.625	1.625	0.3125	0.375
3 std	0.25	1.125	0.4375	3/8	1.375	1.5	0.75	1.00	0.75	1	0.625	0.875	1.625	1.625	0.3125	0.375
4 std	0.1875	1.125	0.5	1/2	1.75	2.25	1.00	1.25	1	1.25	0.875	1.125	2.125	2.125	0.375	0.375

ETD



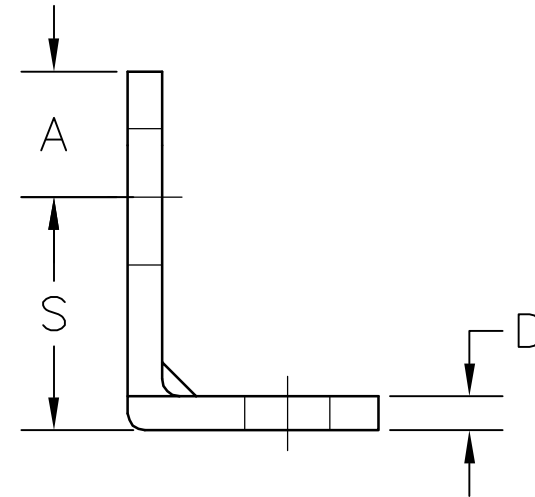
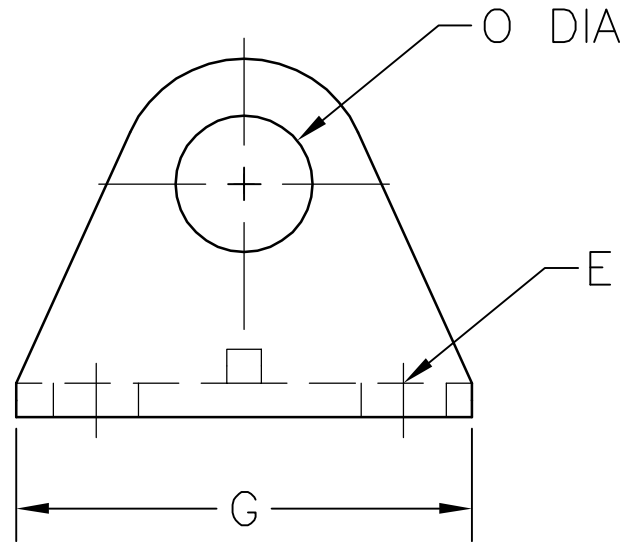
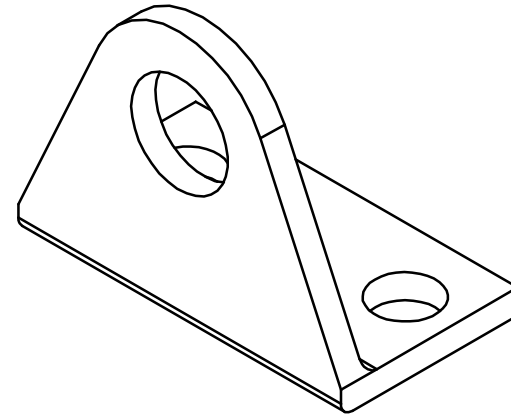
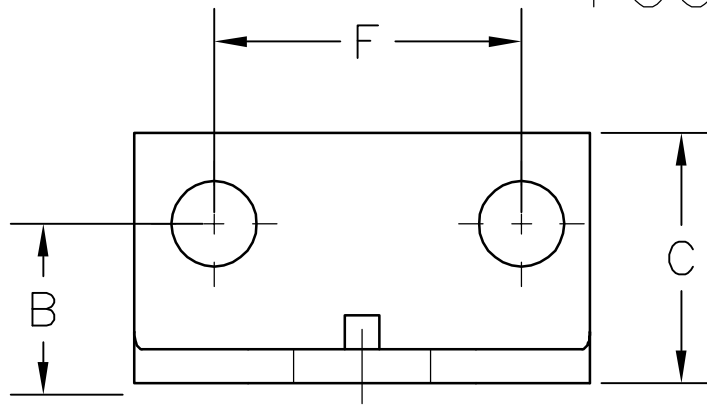
*5.375 SINGLE ENDED CYLINDERS HAVING TANG SECTION EXCEPT TYPES AN, CN, & EN.
 **ON OVERSIZED MODELS, H=1.375 & J=1.25
 ***3/4-16 BOTH ENDS ON TYPES "A" & "E"
 3/4-16 REAR AND 7/8-14 FRONT ON TYPE "C"
 OMIT DIMENSION E WHEN LAYING OUT CYLINDER WITH TANG SECTION OMITTED. N DIMENSION REMAINS EXCEPT ON .875', 1.125' AND 4' BORES.



CYL BORE	A		B	C	D		E	F	G	H	J	M		O	
	A	C & E			STD	OS						STD	OS	STD	OS
1.5 std	X	3.625	0.5	1.75	0.875	0.875	X	X	X	2.0625	1.25	X	X	1.0625	1.0625
2 std	X	3.625	0.5	2.25	0.875	0.875	X	X	X	2.0625	1.25	X	X	1.0625	1.375
2.5 std	X	3.875	0.5625	2.75	1	1	X	X	X	1.6875	1.5	X	X	1.375	1.5
3 std	X	3.875	0.5625	3.25	1	1	X	X	X	1.6875	1.5	X	X	1.375	1.5
4 std	X	*4.875	0.8125	4.375	1.125	1.875	X	X	X	2.25	1.875	X	X	1.75	2.25

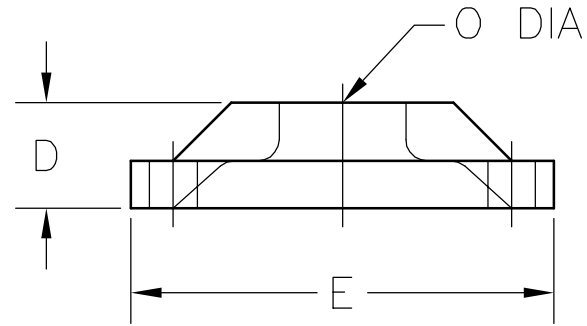
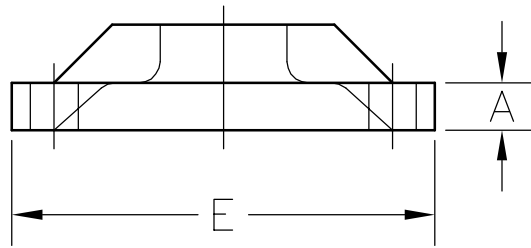
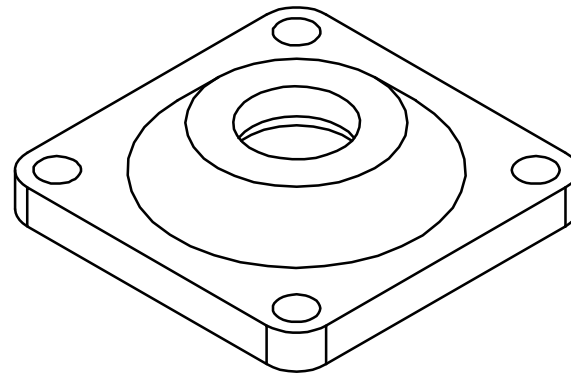
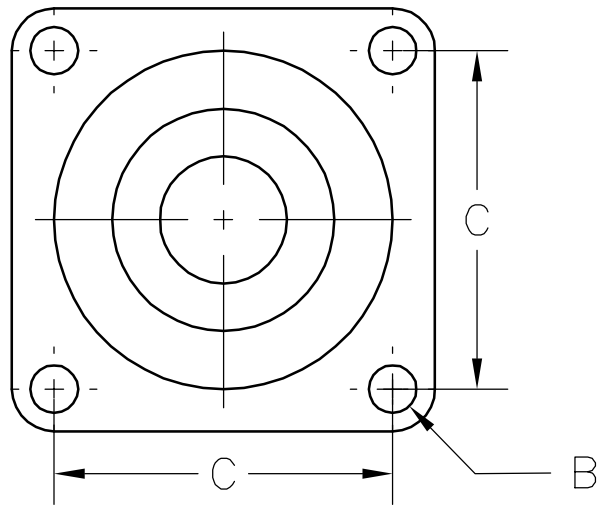
CYL BORE	N	Y	Z	AA	BB		CC		ROD DIA		WRENCH FLATS					
					STD	OS	STD	OS	STD	OS	W		X		Y	
											STD	OS	STD	OS	STD	OS
1.5 std	0.1875	0.75	X	1/4	1	1	0.50	0.62	0.5	0.625	0.4375	0.5	1.375	1.375	0.3125	0.3125
2 std	0.1875	0.75	X	1/4	1	1.375	0.62	0.75	0.625	0.75	0.5	0.625	1.375	1.375	0.3125	0.3125
2.5 std	0.25	1.125	X	3/8	1.375	1.5	0.75	1.00	0.75	1	0.625	0.875	1.625	1.625	0.3125	0.375
3 std	0.25	1.125	X	3/8	1.375	1.5	0.75	1.00	0.75	1	0.625	0.875	1.625	1.625	0.3125	0.375
4 std	0.1875	1.125	X	1/2	1.75	2.25	1.00	1.25	1	1.25	0.875	1.125	2.125	2.125	0.375	0.375

FOOT MOUNT



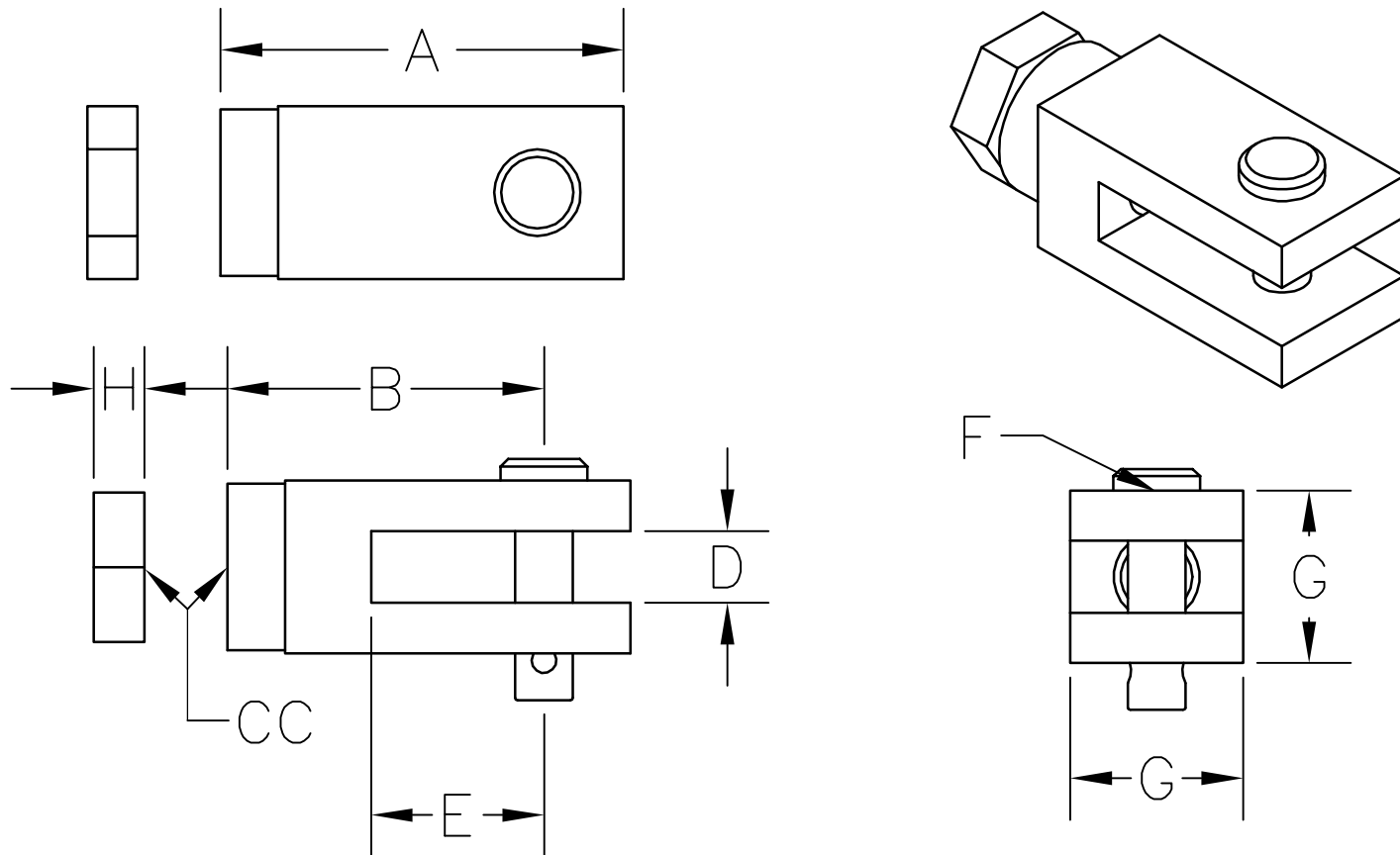
	A	B	C	D	E	F	G	O	S
A-132	.6875	.875	1.375	.1875	.28125	1.6875	2.5	.75	1.28125
A-132-OS	0.6875	0.875	1.375	0.1875	.28125	1.6875	2.5	0.875	1.28125
A-232	1.125	0.875	1.28125	0.25	.28125	1.625	2.5	1.0625	1.75
A-232-OS	1.125	0.875	1.28125	0.25	.28125	1.625	2.5	1.375	1.75
A-332	1.375	1.25	1.90625	0.3125	0.40625	2.25	3.5	1.375	2.375
A-332-OS	1.375	1.25	1.90625	0.3125	0.40625	2.25	3.5	1.5	2.375
A-432	1.875	1.75	2.53125	0.5	0.46875	3.25	5	1.75	3.1875
A-432-OS	1.875	1.75	2.53125	0.5	0.46875	3.25	5	2.25	3.1875

FLANGE MOUNT



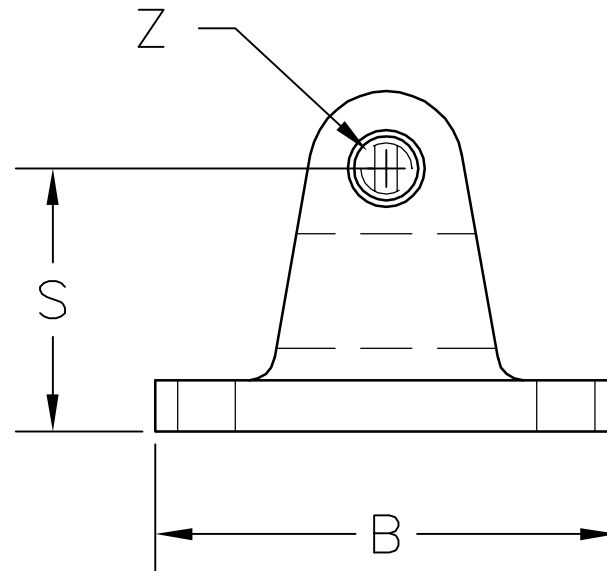
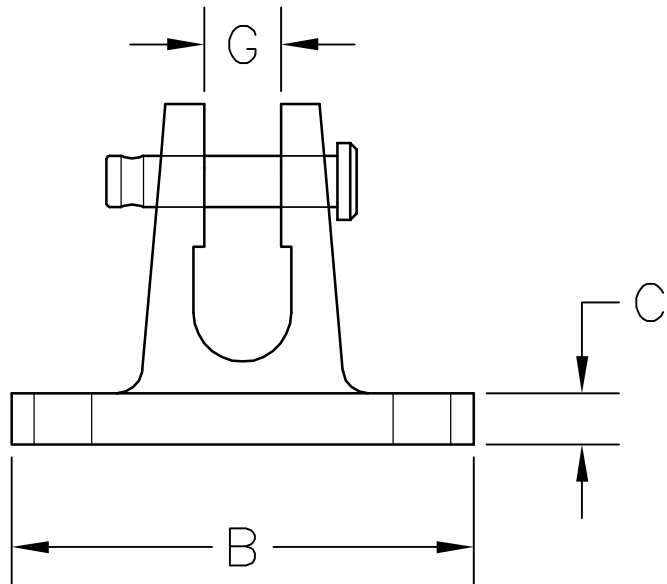
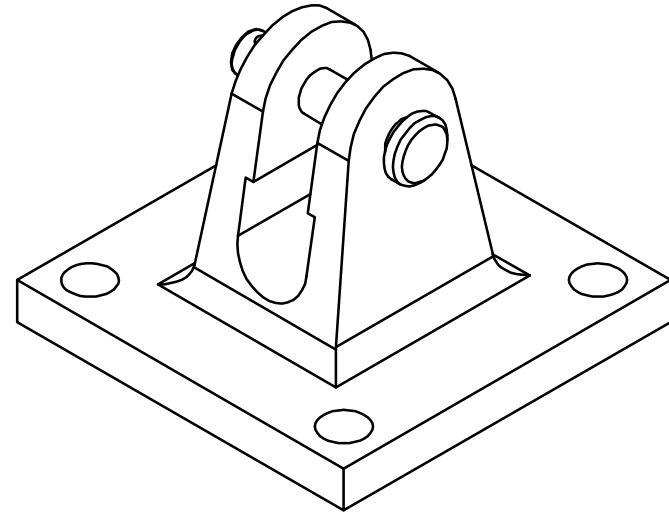
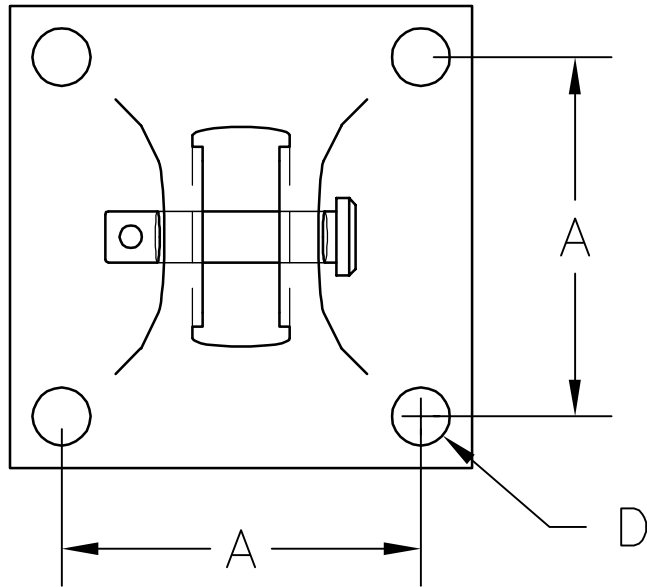
	A	B	C	D	E	O
A-129	.28125	.28125	2	.624	2.5	.75
A-129-OS	.28125	.28125	2	.625	2.5	.875
A-229	0.34375	.28125	2.5	0.875	3.25	1.0625
A-229-OS	0.34375	.28125	2.5	0.875	3.25	1.375
A-329	0.40625	0.40625	3.375	1	4.5	1.375
A-329-OS	0.40625	0.40625	3.375	1	4.5	1.5
A-429	0.4375	0.46875	4	1.125	5.25	1.75

ROD CLEVIS



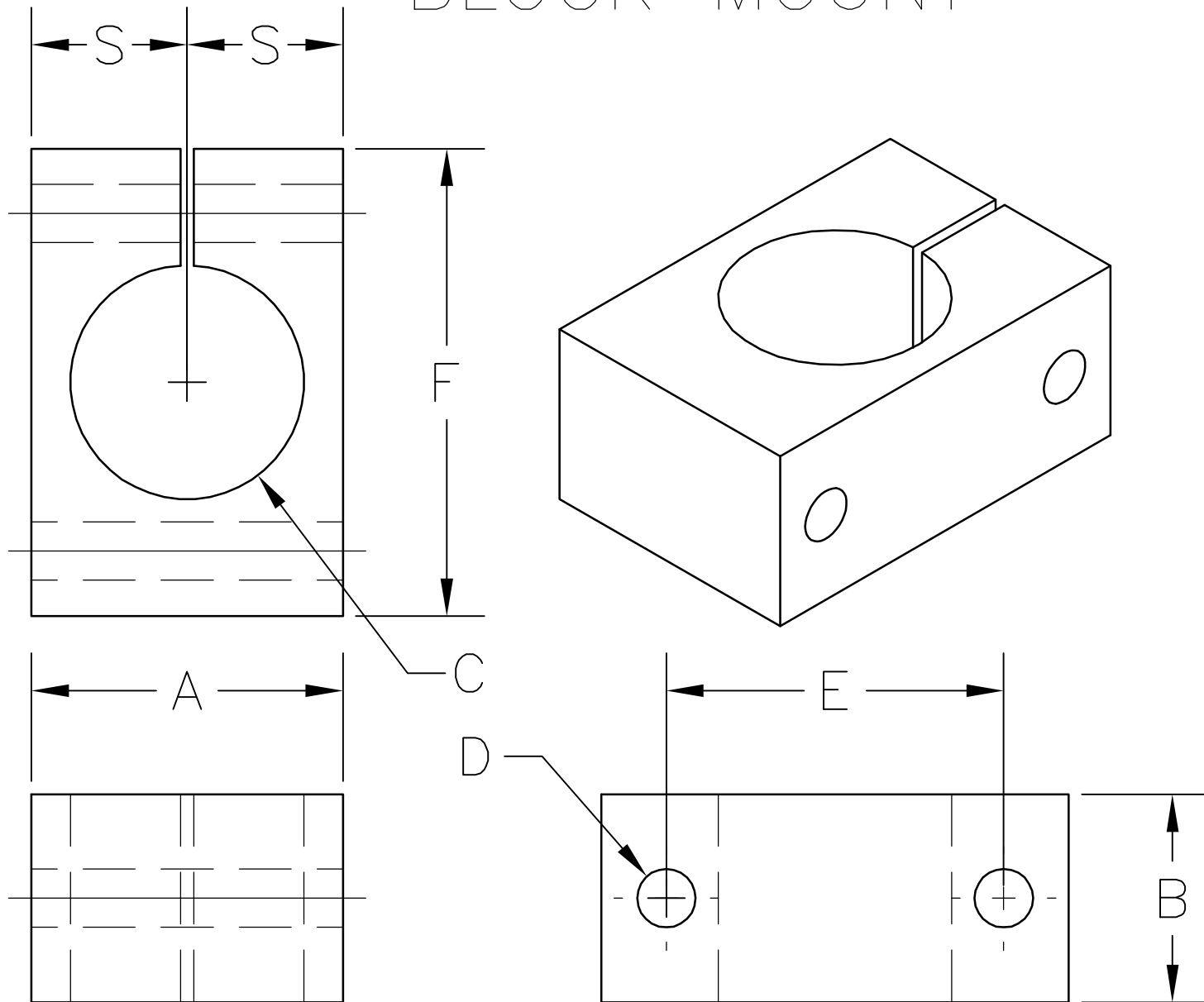
	A	B	Cc	D	E	F	G	H
A-145	1.75	1.375	.375	.3125	.75	.25	.75	.21875
A-145-OS	2.25	1.75	0.5	0.375	0.8125	0.3125	1	0.3125
A-1545	2.25	1.75	0.5	0.375	0.8125	0.3125	1	0.3125
A-1545-OS	2.25	1.75	0.625	0.375	0.8125	0.3125	1	0.375
A-245	2.25	1.75	0.625	0.375	0.8125	0.3125	1	0.375
A-245-OS	2.375	1.8125	0.75	0.5	0.75	0.4375	1.25	0.421875
A-345	2.375	1.8125	0.75	0.5	0.75	0.4375	1.25	0.421875
A-345-OS	3.375	2.625	1	0.625	1.0625	0.5	1.5	0.5
A-445	3.375	2.625	1	0.625	1.0625	0.5	1.5	0.5
A-445-OS	3.5	2.625	1.25	0.75	1.125	0.75	1.75	0.71875

SWIVEL BRACKET



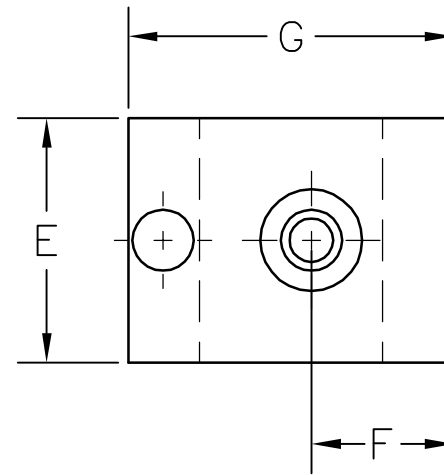
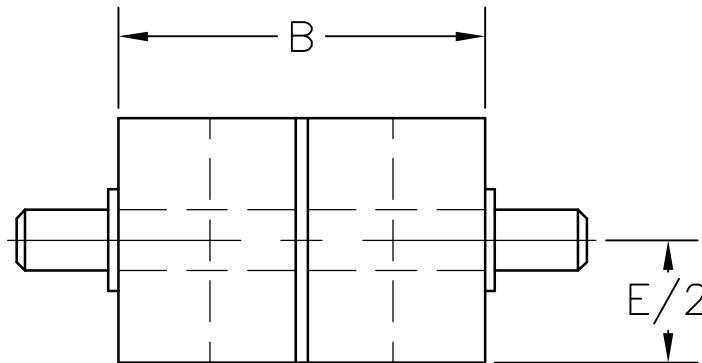
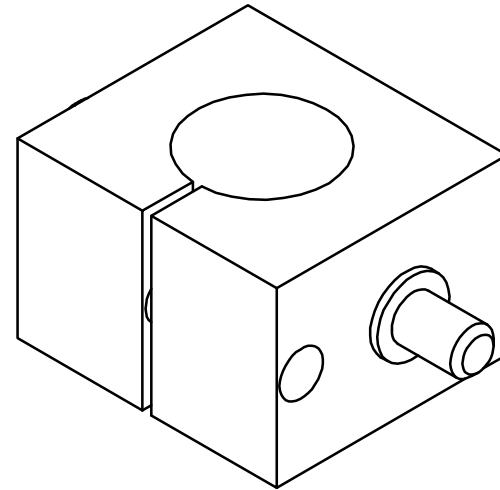
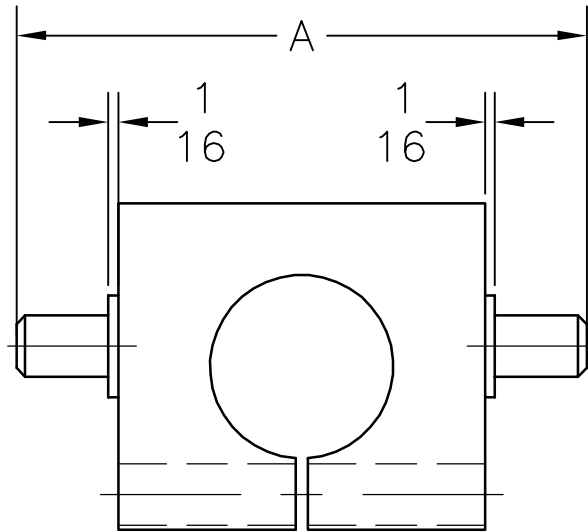
	A	B	C	D	G	S	Z
A-139	1.75	2.25	.25	.28125	.375	1.28125	.25
A-239	2.25	3	0.3125	.28125	0.5	1.75	0.3125
A-339	3	4	0.3125	0.40625	0.625	2.375	0.4375
A-439	3.75	5	0.5	0.46875	0.75	3.1875	0.5

BLOCK MOUNT



	A	B	C	D	E	F	S
BM-7/8	1.5	1	1.125	.28125	1.625	2.25	.75
BM-1 1/8	1.75	1	1.375	.28125	1.875	2.5	0.875
BM-1 1/2	2.25	1.25	1.75	.28125	2.375	3	1.125
BM-2	3	1.25	2.25	0.34375	3	3.75	1.375

TRUNNION MOUNT



	A	B	C	D	E	F	G
T-7/8	3.5	2.25	1.125	.375	.75	.875	2
T-1	3.5	2.25	1.375	0.375	0.75	0.875	2
T-1.5	4	3	1.75	0.5	1.25	1.125	2.625
T-2	4	3	2.25	0.5	1.25	1.375	3.125
T-2.5	5.5	4	2.75	0.75	1.5	1.875	4
T-3	5.75	4.25	3.25	0.75	1.5	2.125	4.5
T-4	7	5.5	4.375	0.75	1.5	2.6875	5.75